

## OPERATING MANUAL AGATE SERIES



### FEATURES



Password



Auto Freeze



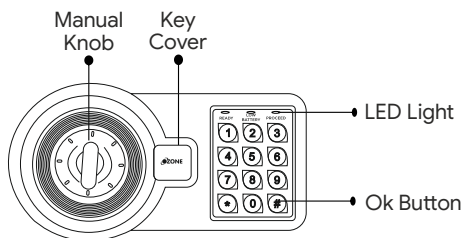
Emergency Key

Agate & Agate Laptop  
Color- Black

Please scan the QR code  
for reference video

## OPERATING INSTRUCTIONS FOR AGATE SAFES

Ozone Agate safe is designed to help you protect your valuables against theft.  
Please install the safe in a cupboard or on a wall/floor and keep the emergency key in a safe place.  
Keep the safe in a secret place for paramount security.



### Accessories Include:

- 1) 2 Keys
- 2) 2 Mounting Bolts
- 3) 4x1.5 Voltage AA Batteries
- 4) Floor Carpet
- 5) Warranty Card

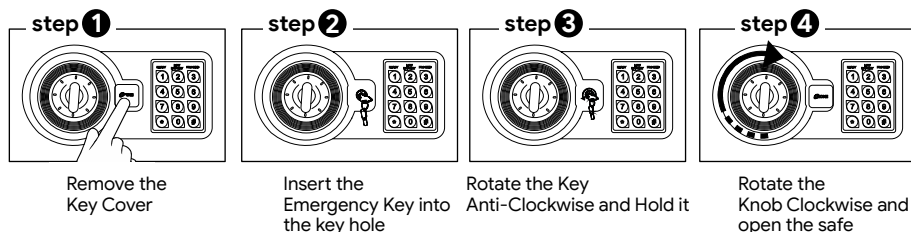
### Specifications:

Model	External Size (HxWxD)mm	Weight (Kg.)	Volume (Ltr.)
Agate Black	200x350x200	5.9	9.8
Agate Laptop	200x430x380	10.7	24.5

**NOTE:** 1) Kindly change the User and Master Password before operating the Digital Safe  
2) Please do not keep the Emergency Keys inside the safe!.

## HOW TO OPEN A SAFE FOR THE FIRST TIME

### 1. OPEN THE SAFE USING THE EMERGENCY KEY



### 2. BY USING EXTERNAL BATTERY ADAPTER

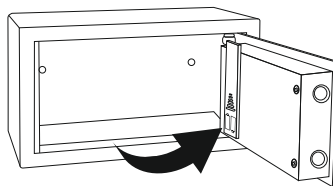


## INSTALLING THE BATTERIES

Open the safe door, remove the battery case cover and insert new AA batteries (4x1.5V) according to '+' '-' polarity.

**Low Battery Indication** - If the red indication blinks in that condition we need to change the batteries.

**NOTE:** In case of battery drain, please replace all the existing batteries with new ones.



## HOW TO CHANGE THE USER PASSWORD

Existing user password is (1234).

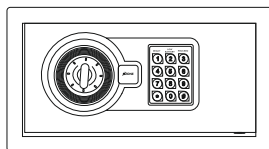
- The safe door must be in open position.
- Press the reset button (given inside of the door), the buzzer will beep twice.
- Enter your new user password (3-8 digits) and press “#” button to confirm, the buzzer will beep twice and yellow indicator goes out, now the user password is changed successfully.

## HOW TO CHANGE THE MASTER PASSWORD

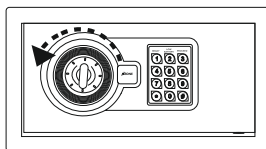
The existing master password is (123456).

- The safe door must be in the open position,
- Press “0” twice then press the reset button (given inside of the door), the buzzer will beep twice.
- Enter your new master password (3-8 digits) and press the “#” button to confirm, the buzzer will beep twice, and the yellow indicator will go out, now the master password is changed successfully.

## TO LOCK THE SAFE



Close the door



Rotate the knob  
Anti-clockwise and close  
the safe

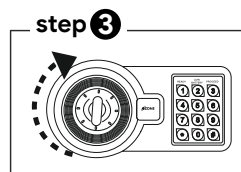
## TO OPEN THE SAFE



Enter your 3-8 digits  
password

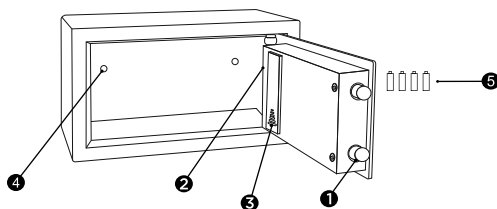


Press “#” Button



Rotate the Knob  
clockwise and open the safe

1. Shooting Bolts
2. Reset Button
3. Battery Box
4. Mounting Hole
5. Batteries



## INSTALLING THE SAFE

Safe can be easily install in wardrobe or on wall.

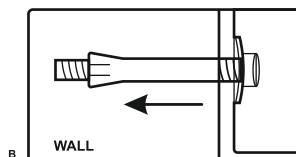
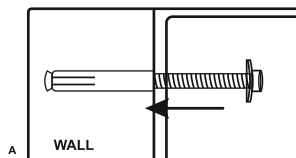
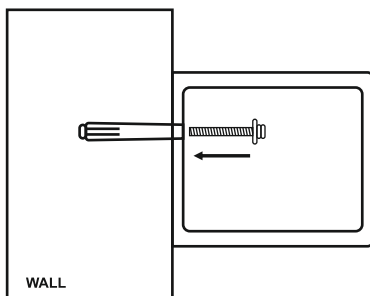
Fix the safe in the place which is not easy to move.

Drill holes for expansion bolts (or clamping screws) in the right place.

Turn the expansion bolts counter clockwise to separate.

Use the expansion bolts (or clamping screws) to secure the case to the wall.

Make sure the case is mounted in place as required and then tighten all screws.



Do's	Don'ts
1) On receipt of the safe, install it properly	1) Don't leave the safe in open position
2) Keep mechanical override key (Emergency Key) at a Safer place	2) Don't Share your password with anyone
3) Always reset the User & Master password after installation of the safe	3) Don't put any extra force on knob while opening or closing the safe

## **OZONE DIGITAL SAFE- CHECK LIST**

**MODEL NO.:** \_\_\_\_\_ **SERIAL NO.:** \_\_\_\_\_

**DATE:** \_\_\_\_\_ **DATE OF DELIVERY:** \_\_\_\_\_

### **CONTENTS:-**

- |                          |                          |
|--------------------------|--------------------------|
| 1. EMERGENCY KEY         | <input type="checkbox"/> |
| 2. PANEL KEY             | <input type="checkbox"/> |
| 3. DRAWER KEY            | <input type="checkbox"/> |
| 4. BATTERIES             | <input type="checkbox"/> |
| 5. ADAPTOR               | <input type="checkbox"/> |
| 6. RFID CARD             | <input type="checkbox"/> |
| 7. FASTNER               | <input type="checkbox"/> |
| 8. MANUAL                | <input type="checkbox"/> |
| 9. OPERATION CHECK       | <input type="checkbox"/> |
| 10. BODY DAMAGE (IF ANY) | <input type="checkbox"/> |

**INSPECTED BY :-** \_\_\_\_\_

CUSTOMER / DEALER SIGNATURE & SEAL

**E-Mail : [Info@ozonesecutech.com](mailto:Info@ozonesecutech.com) | Website: [www.ozonesecutech.com](http://www.ozonesecutech.com)**  
**Customer Care: 9310012300**