

## OPERATING MANUAL

### EZEE SERIES



### FEATURES

Ezee & Ezee+  
Color- Black



Password



Emergency  
Key



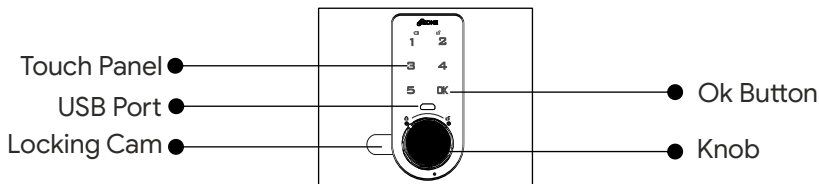
Auto Secure



Low Battery  
Indication

## OPERATING INSTRUCTIONS FOR EZEE SAFES

Ozone Ezee safe is designed to help you protect your valuables against theft. Please install the safe in a Drawer or side table and keep the emergency key in a safe place. Keep the safe in a secret place for paramount security.



### Accessories Include:

- 1) 1 Keys
- 2) 2 Mounting Bolts
- 3) 2x1.5 Voltage AAA Batteries
- 4) Floor Carpet
- 5) Warranty Card

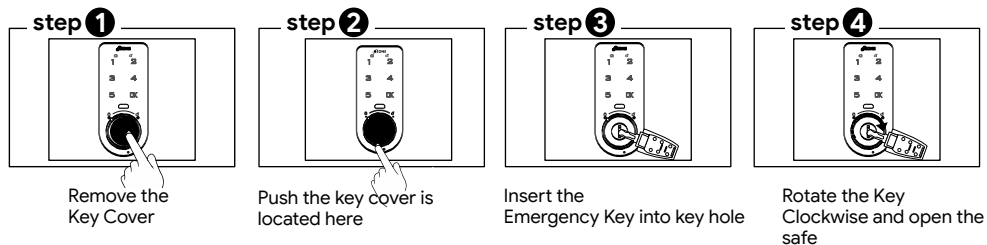
### Specifications:

Model	External Size (HxWxD)mm	Weight (Kg.)	Volume (Ltr.)
Ezee	60x190x275	1.75	2
Ezee+	80x280x350	3	5.28

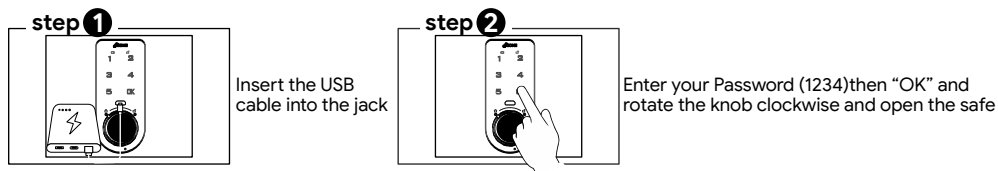
**NOTE:** 1) Kindly change the User and Master Password before operating the Digital Safe  
2) Please do not keep the Emergency Keys inside the safe!.

## HOW TO OPEN A SAFE FOR THE FIRST TIME

### 1. OPEN THE SAFE USING THE EMERGENCY KEY



### 2. BY USING EXTERNAL BATTERY SUPPLY

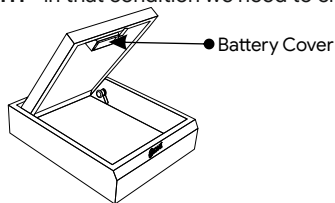


## INSTALLING THE BATTERIES

Open the safe door, remove the battery case cover and insert new batteries (2x1.5V AAA) according to '+' '-' polarity.



**Low Battery Indication** - If the display will show "RED LIGHT" in that condition we need to change the batteries.

**NOTE:** In case of battery drain, please replace all the existing batteries with new ones.





## HOW TO CHANGE THE USER PASSWORD

Existing User Password is (1234).

- Enter factory default user password 1234 + Ok
- Buzzer gives out a long beep sound, the unlocking indicator light will be  on.
- Press OK at least 2 second, unlocking indicator  light blinking
- Enter new password, press "Ok" When you hear a long beep it means the user password has been changed successfully.

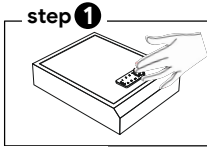
## HOW TO CHANGE THE MASTER PASSWORD

Existing Master Password is (4321).

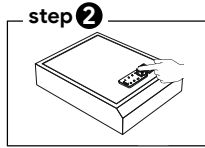
- Enter factory default user password 4321 + Ok
- Buzzer gives out a long beep sound, the unlocking indicator light will be  on.
- Press OK at least 2 second, unlocking indicator  light blinking
- Enter new password, press "Ok" When you hear a long beep it means the master password has been changed successfully.

**NOTE:** (a) 4-15 digits password can be registered,  
(b) Master password should not be same as user password

## TO LOCK THE SAFE



Close the door and hold it.



Rotate the knob anti-clockwise and close the safe

## TO OPEN THE SAFE

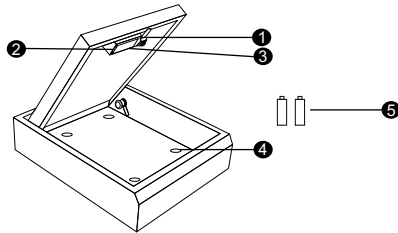


Enter your 4-15 digits password then press "Ok",



Rotate the knob clockwise and open the safe

1. Locking CAM
2. Reset Button
3. Battery Box
4. Mounting Hole
5. Batteries

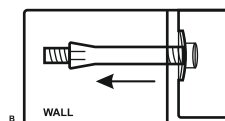
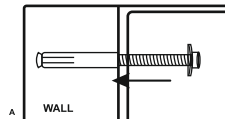
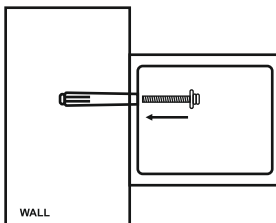


## AUTO FREEZE MODE

After four consecutive times the wrong passwords, the system will be locked for 60 seconds.

## INSTALLING THE SAFE

- Safe can be easily install in Drawer.
- Fix the safe in the place which is not easy to move.
- Make sure the case is mounted in place as required and then tighten all screws.



Do's	Don'ts
1) On receipt of the safe, install it properly	1) Don't leave the safe in open position
2) Keep mechanical override key (Emergency Key) at a Safer place	2) Don't Share your password with anyone
3) Always reset the User & Master password after installation of the safe	3) Don't put any extra force on knob while opening or closing the safe

## **OZONE DIGITAL SAFE- CHECK LIST**

**MODEL NO.:** \_\_\_\_\_ **SERIAL NO.:** \_\_\_\_\_

**DATE:** \_\_\_\_\_ **DATE OF DELIVERY:** \_\_\_\_\_

### **CONTENTS:-**

- |                          |                          |
|--------------------------|--------------------------|
| 1. EMERGENCY KEY         | <input type="checkbox"/> |
| 2. PANEL KEY             | <input type="checkbox"/> |
| 3. DRAWER KEY            | <input type="checkbox"/> |
| 4. BATTERIES             | <input type="checkbox"/> |
| 5. ADAPTOR               | <input type="checkbox"/> |
| 6. RFID CARD             | <input type="checkbox"/> |
| 7. FASTNER               | <input type="checkbox"/> |
| 8. MANUAL                | <input type="checkbox"/> |
| 9. OPERATION CHECK       | <input type="checkbox"/> |
| 10. BODY DAMAGE (IF ANY) | <input type="checkbox"/> |

**INSPECTED BY :-** \_\_\_\_\_

CUSTOMER / DEALER SIGNATURE & SEAL

**E-Mail : [Info@ozonesecutech.com](mailto:Info@ozonesecutech.com) | Website: [www.ozonesecutech.com](http://www.ozonesecutech.com)**  
**Customer Care: 9310012300**