

OPERATING MANUAL FORT AB-66



FEATURES



Fort AB-66
Color - Black

DUAL COMBINATION
ACCESS



5 SPOKE
HANDLE

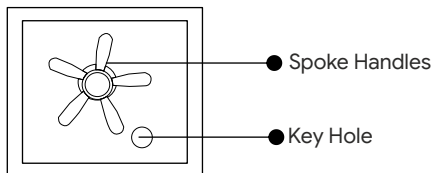


HEAVY DUTY
SHOOTING BOLT

OPERATING INSTRUCTIONS FORT AB-66 SAFE

Ozone Fort AB-66 safe is designed to help you protect your valuables against theft. Please install the safe in a cupboard or on a wall/floor and keep the emergency key in a safe place.

Keep the safe in a secret place for paramount security.



Accessories Include:

- 1) 4 Keys
- 2) 4 Mounting Bolts
- 3) 5 Spoke Handles
- 4) Warranty Card

Specifications:

Model	External Size (HxWxD)mm	Weight (Kg.)	Volume (Ltr.)
Fort AB-66	555x460x350	64.34	78

HOW TO OPEN A SAFE FOR THE FIRST TIME

The safe is already open but only the door remains closed please rotate the handle hub clockwise to open the door.

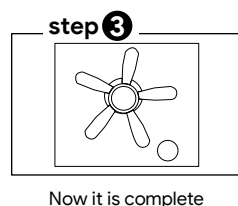
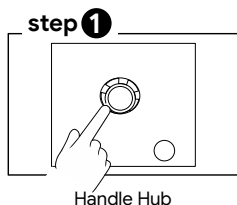
INSTALLING THE SPOKE HANDLE

Open the door

Please pick up the 5 pieces spoke handle which is available inside the safe in the box.

Install the spoke handles to handle hub from the front of the door.

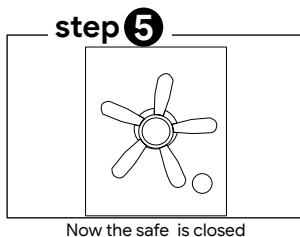
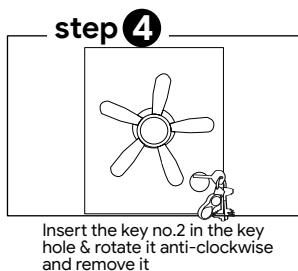
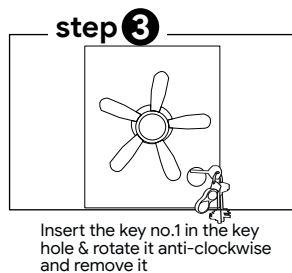
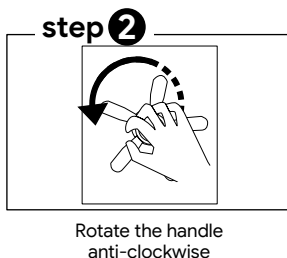
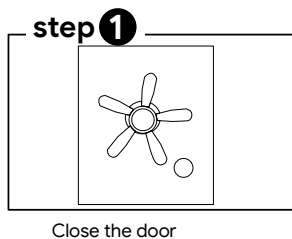
HOW TO INSTALL SPOKE HANDLE



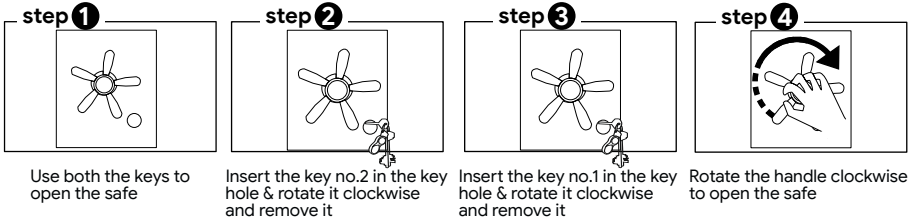
CAUTION

- Install the all handles properly in handle hub.
- Two keys will be required you open and close the safe.
- >Key no.-1
- >Key no.-2

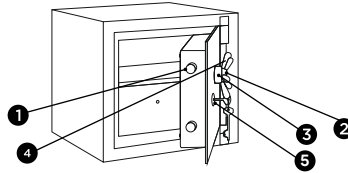
TO LOCK THE SAFE



TO OPEN THE SAFE

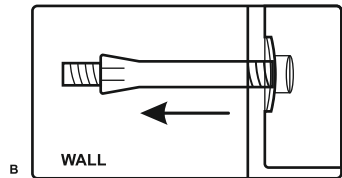
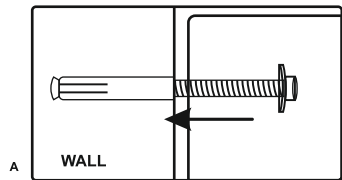
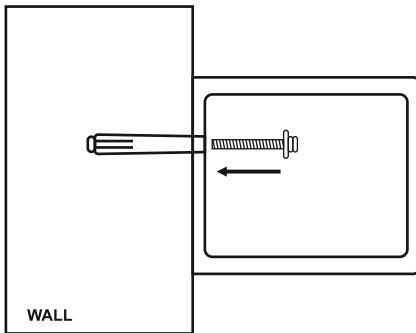


1. Shooting Bolts
2. Hidden Hinges
3. Handle Hub
4. Spoke Handles
5. Key Hole



INSTALLING THE SAFE

Safe can be easily install in wardrobe or on wall.
 Fix the safe in the place which is not easy to move.
 Drill holes for expansion bolts (or clamping screws) in the right place.
 Turn the expansion bolts counter clockwise to separate.
 Use the expansion bolts (or clamping screws) to secure the case to the wall.
 Make sure the case is mounted in place as required and then tighten all screws.



Do's	Don'ts
1) On receipt of the safe, install it properly	1) Don't leave the safe in open position
2) Keep mechanical override key (Emergency Key) at a Safer place	2) Do not install safe in Moisture areas
3) Please check the door properly after closing the door	3) Do not apply any extra force on the keys on opening and closing the door

OZONE DIGITAL SAFE- CHECK LIST

MODEL NO.: _____ **SERIAL NO.:** _____

DATE: _____ **DATE OF DELIVERY:** _____

CONTENTS:-

- | | |
|--------------------------|--------------------------|
| 1. EMERGENCY KEY | <input type="checkbox"/> |
| 2. PANEL KEY | <input type="checkbox"/> |
| 3. DRAWER KEY | <input type="checkbox"/> |
| 4. BATTERIES | <input type="checkbox"/> |
| 5. ADAPTOR | <input type="checkbox"/> |
| 6. RFID CARD | <input type="checkbox"/> |
| 7. FASTNER | <input type="checkbox"/> |
| 8. MANUAL | <input type="checkbox"/> |
| 9. OPERATION CHECK | <input type="checkbox"/> |
| 10. BODY DAMAGE (IF ANY) | <input type="checkbox"/> |

INSPECTED BY :- _____

CUSTOMER / DEALER SIGNATURE & SEAL

E-Mail : Info@ozonesecutech.com | Website: www.ozonesecutech.com

Customer Care: 9310012300