

## OPERATING MANUAL FORT SAFE AB DIGI- 66



### FEATURES

Fort Safe AB Digi-66  
Color - Black



Password



Emergency Key



Low Battery  
Indication

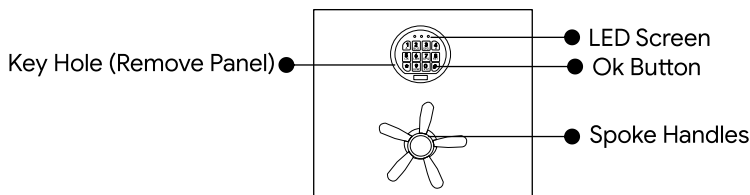


Auto Freeze

## OPERATING INSTRUCTIONS FOR FORT AB DIGI SAFE

Ozone Fort AB Digi safe is designed to help you protect your valuables against theft. Please install the safe in wall or on a floor and keep the emergency key in a safe place.

Keep the safe in a secret place for paramount security.



### Accessories Include:

- 1) 2 Keys
- 2) 4 Mounting Bolts
- 3) 1 x 9v Battery
- 4) Floor Carpet
- 5) 5 Spoke Handles
- 6) Warranty Card

### Specifications:

Model	External Size (HxWxD)mm	Weight (Kg.)	Volume (Ltr.)
Fort AB Digi-66	555x460x360	64.34	78

**NOTE:** 1) Kindly change the User and Master Password before operating the Digital Safe  
2) Please do not keep the Emergency Keys inside the safe!

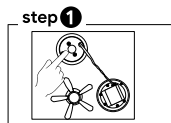
## HOW TO OPEN A SAFE FOR THE FIRST TIME

The Fort AB Digi-66 Safe is shipped from the factory in the closed position.

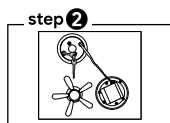
### **Note:**

After opening the safe by emergency key, please lift the 5 piece spoke handle provided inside the safe in the box and fix the spoke handle to the handle hub.

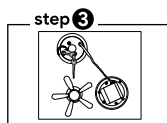
## OPEN THE SAFE USING THE EMERGENCY KEY



Remove the front panel



Insert the Emergency Key into the key hole

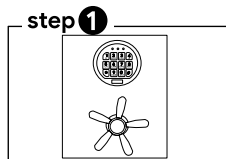


Turn the Key Clockwise

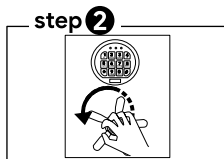


Rotate the Handle Clockwise and open the safe

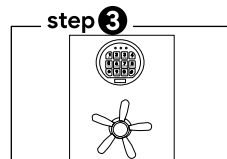
## TO LOCK THE SAFE



Close the door



Rotate the handle anti-clockwise



Now the safe is closed

**Note:** Please rotate the handle clockwise to check whether the safe is locked or not .

## INSTALLING THE BATTERIES

Open the safe door, remove the battery case cover and insert new batteries (1x9V) according to '+' '-' polarity.

**Low Battery Indication** - If the display will show "RED LIGHT" in that condition we need to change the batteries.

**NOTE:** In case of battery drain, please replace all the existing batteries with new ones.



## HOW TO CHANGE THE USER PASSWORD

Existing password is (1234).

a) The door must be in the open position.

b) Enter old User password 1234 then press "#".

c) Display will show Green light then press "\*".

d) The display will show yellow light, then enter the new User password press "# " button to confirm. When you hear three beeps the yellow LED turn off, you change the password successfully

## HOW TO CHANGE THE MASTER PASSWORD

Existing password is (12345678).

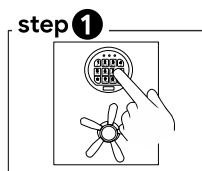
a) The door must be in the open position.

b) Enter old Master password 12345678 then press “#”.

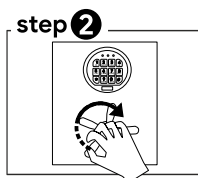
c) Display will show Green light then press “\*”.

d) The display will show yellow light, then enter the new Master password press “#” button to confirm. When you hear three beeps the yellow LED turn off, you change the password successfully

## TO OPEN THE SAFE



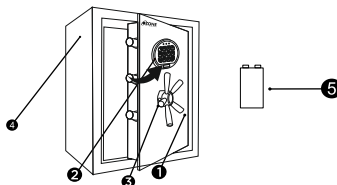
Enter your 3-8 digits password then press “#”



Rotate the handle clockwise and open the safe

**NOTE:** Kindly check the handle after closing the door.

1. Shooting Bolts
2. Reset Button
3. 9V Battery
4. Mounting Hole
5. Batteries



## INSTALLING THE SAFE

Safe can be easily install in wardrobe or on wall.

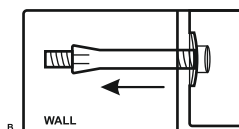
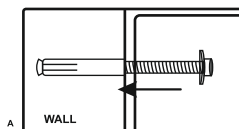
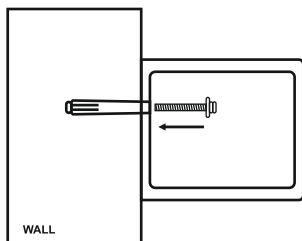
Fix the safe in the place which is not easy to move.

Drill holes for expansion bolts (or clamping screws) in the right place.

Turn the expansion bolts counter clockwise to separate.

Use the expansion bolts (or clamping screws) to secure the case to the wall.

Make sure the case is mounted in place as required and then tighten all screws.



Do's	Don'ts
1) On receipt of the safe, install it properly	1) Don't leave the safe in open position
2) Keep mechanical override key (Emergency Key) at a Safer place	2) Don't Share your password with anyone
3) Always reset the User & Master password after installation of the safe	3) Don't put any extra force on spoke handle while opening or closing the safe

## **OZONE DIGITAL SAFE- CHECK LIST**

**MODEL NO.:** \_\_\_\_\_ **SERIAL NO.:** \_\_\_\_\_

**DATE:** \_\_\_\_\_ **DATE OF DELIVERY:** \_\_\_\_\_

### **CONTENTS:-**

- |                          |                          |
|--------------------------|--------------------------|
| 1. EMERGENCY KEY         | <input type="checkbox"/> |
| 2. PANEL KEY             | <input type="checkbox"/> |
| 3. DRAWER KEY            | <input type="checkbox"/> |
| 4. BATTERIES             | <input type="checkbox"/> |
| 5. ADAPTOR               | <input type="checkbox"/> |
| 6. RFID CARD             | <input type="checkbox"/> |
| 7. FASTNER               | <input type="checkbox"/> |
| 8. MANUAL                | <input type="checkbox"/> |
| 9. OPERATION CHECK       | <input type="checkbox"/> |
| 10. BODY DAMAGE (IF ANY) | <input type="checkbox"/> |

**INSPECTED BY :-** \_\_\_\_\_

CUSTOMER / DEALER SIGNATURE & SEAL

**E-Mail : [Info@ozonesecutech.com](mailto:Info@ozonesecutech.com) | Website: [www.ozonesecutech.com](http://www.ozonesecutech.com)**

**Customer Care: 9310012300**